



wheezy Rider

Newsletter of the Fremantle group

Nov 2016
No 180

Newsletter of the Fremantle Branch of the Ulysses Club of Australia Inc.

Price
\$1.00

Hi Everyone,

Spring has finally got here! There have been some beautiful riding days too.

It looks like Patrick is keen on getting the Ride leaders bottle of wine this month as he has lead most of the rides. Thanks for stepping up to take over when needed Patrick.

The Ride to Conquer Cancer was again a successful event, thank you Tony Collins and everyone that volunteered some time over the weekend.

The Christmas Cocktail Party is on Saturday the 26th November

At: The South Beach Hotel

Where: South Tce, South Fremantle

Time: 6.30 for 7.00pm until late

Cost: \$45 per person

RSVP: by 16th November to sectreas@ulyssesfremantle.com

Payments by direct debit to 036-019 248086 using your name as a reference.

Anyone wanting to pay by cash - it must be given to John Pepper our Treasurer so he can record your name and issue a receipt.

- Welcome drink included
- Plenty of Hot and Cold Canapes
- There will also be door prizes on the night. Including a \$100 hamper.

Full bar available. The committee has put quite a bit of thought into the Christmas Party trying to make it a more social event and has subsidised the cost to try and keep it more affordable for everyone. Please come along and make it a really good night. We only have about 35% of the required number currently booked in. Please RSVP now so we can get a better idea of numbers before the 16th November cut off.

Upcoming rides for November, come along...

- 6th Mark & Annie's Irishtown Ride
- 12th & 13th Collie around the houses
- 13th Patrick leads the ride to Pippa's Music in the Park
- 20th The Mike Smith Memorial Ride (5 towns)

I am in Melbourne for the Monthly Social Meeting on the 9th but I have passed my duties over to Patrick. I have even given him a few of my jokes so you don't miss out!

That's it for now

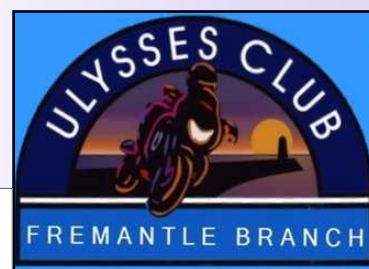
Remember— It's not what you ride, it's your attitude that counts.

Colin Booth 61215

President Ulysses Fremantle Branch



We don't care.... We ride there



Proud Web Sponsors



Chain Reaction : Call 08 9258 5600



Custom Bike Electrics : Call 08 93542270



Willetton Exhaust : Call 08 9354 5004



FREMANTLE BRANCH MEETING
2ND WEDNESDAY OF THE MONTH AT THE
LEOPOLD HOTEL 326 CANNING HWY BICTON WA.
The committee is the servant of the Group, not the Master

2015/2016 COMMITTEE:

President Colin Booth Member 61215
President@ulyssesfremantle.com

Secretary/Treasurer John Pepper Member 40751
SecTreas@ulyssesfremantle.com

Committee Glenda McGregor Member 32282
Pat Tinnelly Member 61165
Mark Gilbert Member 62437

Ride Coordinator Pat Tinnelly Member 61165
RideCo@ulyssesfremantle.com

Wheezy Rider Editor Mick Katarski Member 55306
Editor@ulyssesfremantle.com

Web Master Ron Spencer Member 53780
Webmaster@ulyssesfremantle.com

Quartermaster Paul Turner Member 61557
Qm@ulyssesfremantle.com

AROUND THE BRANCHES

ARMADALE BRANCH

Richard Peddel 93908764

BUNBURY BRANCH

Trevor Rose 0407998872 trevrose@westnet.com.au

ESPERANCE BRANCH

Steve Smith (Homer) homers@westnet.com.au

GERALDTON BRANCH

Bruce Ralph 08-99642392 0427-642-392

Bruce Ralph ralphy@wn.com.au

JOONDALUP GROUP

Ken Eaton 0893012727 ken@eatondesign.com.au

MANDURAH BRANCH

President mmugpres@hotmail.com

Secretary mmugsec@hotmail.com

PERTH BRANCH

John Gliddon 93320440 0417-945-789

WARNBRO SOUND WANDERERS

Dianna Glover, Branch President, 0419 919 275

Julie Wilcox, Branch Secretary, 0402 955 399

GREAT SOUTHERN BRANCH

Ray Prior 0898429293 guzzirider@aapt.net.au

KALGOORLIE

Andrew Mason 0890914220 0419922860

WEB ADDRESSES

National Ulysses site: www.ulyssesclub.org

Fremantle Ulysses site: www.ulyssesfremantle.com

Note: Next meeting, Wednesday
11th
January 2017

Plods and Saturday morning coffee

Wednesday morning Plods meet at South Beach for a 9:30am start.

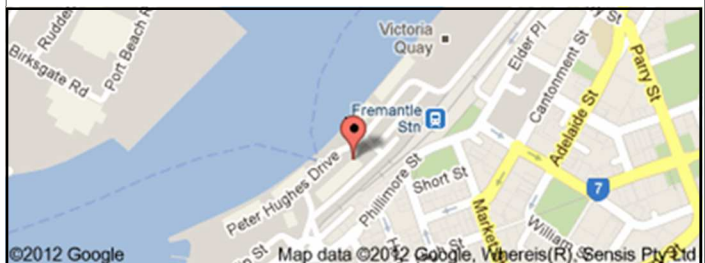
Any enquiries regarding plods can be directed to any of the following:

Will Duncan 0403014197

Patrick Hayes 0414756452

Mick Webb 0893396874

The Saturday morning coffee get togethers will also continue to take place at the Victoria Café, however commencement will be from 10.00am.



DISCLAIMER. All expressions of opinion are published on the basis that they are not to be regarded as expressing the official opinion of the Ulysses Club but are included for general interest only. The Ulysses Club Fremantle Branch accepts no responsibility for the accuracy of any of the opinions or information contained in the Wheezy Rider and readers should rely on their own enquiries in making any decisions touching their own interest. Errors and omissions excepted. Publication of articles at Editor's discretion.



The President and Committee invite you to attend the branch
Christmas Cocktail Party

At: The South Beach Hotel

Where: South Tce, South Fremantle

When: Saturday 26th November 2016

Time: 6.30 for 7.00pm until late

Cost: \$45 per person

RSVP: 16 November to sectreas@ulyssesfremantle.com

Payments by direct debit to 036-019 248086 using your name as a reference. **NOTE this is a new Bank Account don't use the old one. Anyone wanting to pay by cash - it must be given to John Pepper our Treasurer so he can record your name and issue a receipt.**

Welcome drink included

Plenty of Hot and cold Canapes

There will also be door prizes on the night.

Full bar available

Good venue with plenty of room to mingle and catch up with everyone before the silly season hits.

Come along it should be a great night

(Odyssey Update)

Odyssey 2017

Team Contact List

Role	Name	Phone	E-Address
Event Co-ordinator	Tony COLLINS	0428 487 805	Co-ord@wa-odyssey.com
Secretary & Entertainment	Pippa LEAHY	0418 940 766	Sec@wa-odyssey.com
Treasurer	Steve SAWTELL	0438 912 039	Treas@wa-odyssey.com
Sponsorship & Promotion	Alan LEAHY	0419 953 327	SandP@wa-odyssey.com
Webmaster	Ron SPENCER	0405 060 201	webmaster@wa-odyssey.com
Venue & Facilities	Steve ZARETZKY	0457 036 085	VandF@wa-odyssey.com
Registration	Kirsten COLLINS		Reg@wa-odyssey.com
Ex Officio			
Fremantle President	Colin BOOTH	0413 050 739	President@ulyssesfremantle.com
Ride Co-ordinator	Eric ILETT	0418 950 755	ericilett@gmail.com
Catering	Allison BOOTH	0428 965 868	Allison.Booth@westnet.com.au



MUSIC **In The Park**

SUNDAY NOVEMBER 13TH

2016 2-5PM

 **TO BE HELD ON THE OVAL AT** 
FOREST CRESCENT PRIMARY SCHOOL, THORNLIE

**COME ALONG & LISTEN TO MUSICIANS
& VOCALISTS**

 ****BYO CHAIR AND SHADE**** 

**COME ALONG AND SHOW YOUR SUPPORT BY
DONATING MUCH NEEDED FUNDS TO**

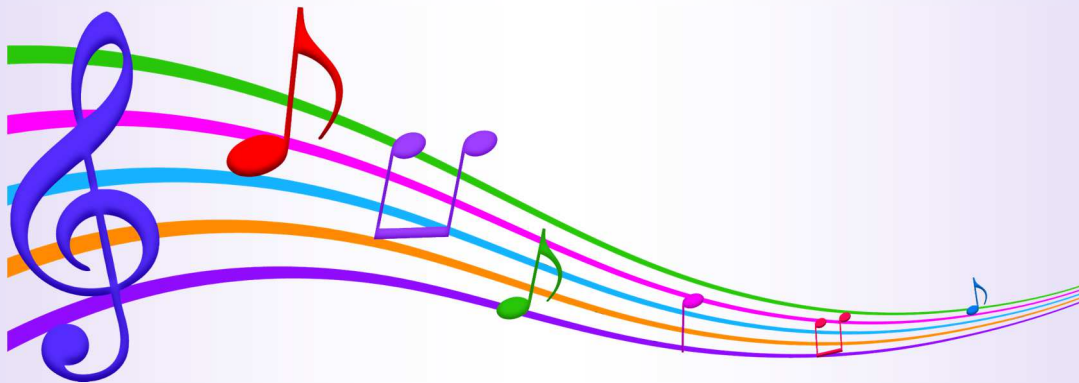


**Cancer
Council**
Western Australia

Community
Supporter

HOPE TO SEE YOU THERE! 

Music In The Park



“Music In The Park” is a fundraising concert, that to date has passed on 100% of the money donated to Cancer Council WA. Alan and Pippa Leahy have been holding this event for the past 3 years, with all the artists and organisers donating their time to put the event together.

This event has been a dream of Pippa’s for years and one she has been able to share with the community. After losing her brother and sister to cancer years ago, Pippa wanted to start a fundraiser and what better way of doing it than through music. This is even more relevant as Pippa has just recently lost her mother to cancer also.

This year’s event will again be raising money for the Cancer Council with 100 per cent of the proceeds going to the not for profit organisation.

Pippa has said that music is therapeutic to everyone and when she plays the piano, she can lose herself in her own world.

“Music In The Park” will take place at the Forest Crescent Primary School oval on Sunday November 13th from 2-5pm. The Principal Mr Ian Anderson said he was looking forward to having the community come together for such a worthy cause. Some of the artists performing will be Michael De Grussa formerly of Eskimo Joe, Emmalena Huning a child prodigy playing the flute, a choir, guitarists, pianists and many more.

Bring a chair or picnic rug plus your own piece of shade. The Forest Crescent Primary School will be organising a coffee van which will also sell nibbles and organising a sausage sizzle.

So please come along and help this worthwhile cause, don’t be afraid to dig deep and donate, as we are all affected by this hideous disease one way or another, either through our own experience, a family member or someone we know. If you are unable to make it on the day you can still donate, just contact Pippa.

We look forward to seeing you all there to support the event and enjoy the music.

Fremantle Branch Ride Leader Steve Zaretsky
2017 Ulysses AGM Trek
Port Macquarie and Return

Departs Perth Saturday 6 May 2017

Arrives Port Macquarie Sunday 14 May 2017

Week 1: Overall seven days riding plus two days leisure probably Ceduna or Streaky Bay.

Week 2: Have a week of your own time or volunteer to help with AGM setting up.

Week 3: AGM Week. Plenty of Rides and Socialising.

Week 4: Overall seven days of riding plus one leisure day getting back to Perth.

Return Date Sunday 4 June 2017

WANTED - 2x Support Vehicle Driver/s (Beer wagon drivers/cooks)
(May be rider interchange)

I am happy to provide a vehicle for the return trip but it will need a driver or two. Here is **WHY**:

- A Pint of Beer will cost about \$11.00.
- If 6 people have three pints each every night then the cost of beer alone will be around \$3400.
- If we have a support vehicle we can drink 6 cans each per night at @\$2 / can for \$1200.

This unbudgeted cost saving alone will pay for the support vehicle. The savings are even greater if we factor in the support vehicle carrying our tents / stretchers and other cooking gear and food supplies. We can also reduce our riding distances by cutting out our leisure days.

8 days riding @ 525km / day

9 days riding @ 460km / day

With support vehicle and sleeping in Tents on cots we have greater control over where we stop for overnight camps. We can eat reasonably healthy and fresh food and can have hot coffee, cold beer or cheap red at our own price.

Provide own tent and cot (assume currently owned)	\$0	(also reduces AGM accom cost)
The occasional Caravan park fee (Return)	\$400	

Fuel for Support vehicle	(Return)	\$2200
Food per head /day \$20 x 17 x 8	(2x drivers)	\$2700
	Sub total	\$5300

Item	Nights / KMS	Total approx
Fuel @ \$1.40/ltr	8400km	\$850
Meals	17 days	\$340
Occasional C/van pk fee		\$50
Support vehicle fuel / 8	\$2200	\$275
	Total per rider return	\$1515

Add 6 cans of beer per person per night @\$2 can - \$200 (\$1715 each total)

The savings increase exponentially if Red Wine is consumed.

The support vehicle driver's share of cost is approx. \$765

How it works. Each person deposits \$800 (rounded for contingency) into a specified credit / debit card account. Two cards are issued. All costs associated with Support vehicle (including wear and tear costs like blown tyres), with food and caravan parks / camping are to be drawn against the card balance.

Unsupported costs as follows

Accommodation (to Port Macquarie) – Budget about \$120 per night for a double bed or twin share in Motel style.

Food – if you carry your own brekky cereal and stove for coffee

Lunch as a burger or similar about \$15

Tea - a pub meal or roadhouse about \$20 - \$30 per night depending on choice. Obviously if you have a stove you can cook / reheat your own food a lot cheaper

Fuel - I think the most expensive fuel I paid for was \$1.68 per litre. A big cruiser doing 14.25km/ltr would use about 600 litres, return. Average that at \$1.40 /ltr and you will need to allow \$850 for fuel for the return trip. Average ride day is 600km.

AGM - Accommodation – best on offer is a Tent City Tent on site at Port Macquaire. Each tent has two camp stretchers / cots and full rubber floor and usually a 12v light and two chairs. See AGM Registration. If you volunteer for a few days starting the Monday 15th May you will usually be allowed to camp for free (to be confirmed) at the AGM site in set up week.

Item	Nights / KMS	Total approx
Fuel @ \$1.40/ltr	8400km	\$850
Lunch	17 days @ \$15	\$255
Evening meals	17 days @ \$25	\$425
Motel accom	17 nights @ \$120/2	\$2000 / \$1000
	Total per person Share	\$2530

Add \$560 for an allowance of 3 pints of beer per person per night (\$3090 each Total)

Contact details: 0457036085 or email steve.zaretsky@gmail.com

A WARM WELCOME AWAITS YOU
AT THE YERECOA TAVERN
GREAT HOME COOKED MEALS

COLDEST BEER FOR MILES

**B B Q FACILITIES. LIMITED
OVER NIGHT ACCOMMODATION
DISCOUNT ON ADVANCE GROUP
BOOKINGS**

SECURE PARKING FOR BIKES

**CONTACT YOUR HOSTS CHARLIE
& DI CLARKE [Ulysses members]**

PHONE 9654 6032

E MAIL checkpointsystems@bigpond.com



WA Companies who support the Ulysses Club

(Please ensure you supply Club ID)

American Motorcycles.

211 Albany Highway Victoria Park WA 6100
Tel: (08)9361 4884. 10% Discount on most after
market parts and workshop

Five Star Yamaha.

54 Rockingham Rd Hamilton Hill WA 6163
Tel:08 9430 4090
Up to 20% Discount on parts and accessories

Hoon's Workshop.

U3/5 Church Road, Maddington WA 6109
Tel: Vince 9493 5444. Trailer, Towbars, Bike
Modifications & Custom Parts painted or chromed &
more..... By a Ulyssian for Ulyssians

In City Used Motorcycles Pty Ltd.

614 Albany Highway Victoria Park WA 6100
Tel: 08 9470 4446. Special Ulysses discount

Kim Britton Kawasaki.

2/91 Dickson Road Rockingham WA 6168
Tel: 08 9592 1113
Special Ulysses price on application

Mack 1 Motorcycles.

237 Great Eastern Highway Midland WA 6056
Tel: (08) 9250 2522. 15% Discount on access and
5% Discount for tyres plus free fitting

Motomax.

Dealer for Royal Enfield, Benelli, Sherco, SWM and
Cfmoto. Motorcycle sales, service and parts.
28 Hutton St, Osborne Park WA 6017. Ph. 9244 4441 or
Ric Steele 0417 977 937. <http://www.motomax.com.au/>
15% Discount

Motorcycles Plus.

126 Kewdale Road, Kewdale WA 6105
Tel: (08) 9353 4567. 10% Discount on parts, labour and
repairs and tyres

Rockingham Powersports.

59 Dixon Road Rockingham WA 6168
Tel: (08) 9527 5093 10% Discount

Total Motorcycle Accessories.

1028 Albany Highway East Victoria Park WA 6107
Tel: (08) 9472 3030
Special Ulysses price on application

Tyres for Bikes.

621 Albany Highway, Victoria Park, WA 6100
Tel: 08 9362 6262. 10 % Discount

Witch Cycles Suzuki.

109 Day Rd Rockingham WA 6168
Tel: (08) 9527 2398. 10% Discount

Some shots from Andy's run to Waroona





Some shots from Simon's ride to El Cabello via Beverley



Retrospective: 1922 Humber Cycle

Article and Photos by: Paul Garson September 22, 2015



This original, unrestored 1922 Humber is a bit crusty and, because of its looks of plumbing run amuck, might elicit a chuckle or two, but it's much sought after across the Pond in Merry Ol' England. Back in 1922, this stovepipe-black Humber was "the bee's knees" and considered way ahead of its time.

Prior to launching its motorcycles, the pioneering Coventry-based Humber Ltd. company was famous for its bicycles, its De Dion-engined 3-wheelers, and even early airplanes as well as its popular automobiles. In 1913, Humber was the second largest manufacturer of cars in the UK.



While ungainly looking, the Humber was stoutly powered by a 600cc, 4.5 hp flat-Twin, with horizontally opposed cylinders arranged longitudinally rather than across the frame like BMW Boxers.

In 1896, its founder Thomas Humber was also credited with producing England's first practical motorcycle. With continued development, by 1911, a 340cc Humber V-Twin won the famous Isle of Man Junior TT. Later machines, as seen here, featured horizontally opposed side-valve Twins in a variety of displacements.

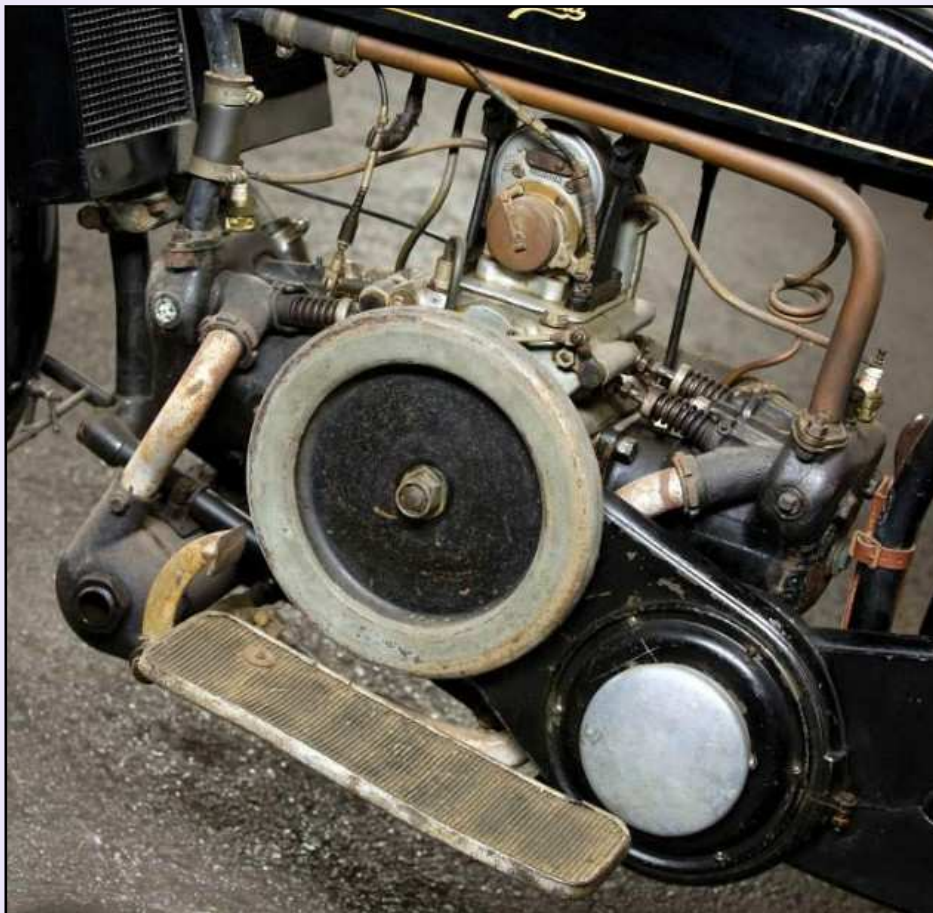
Uncommon for its time, the Humber's 600cc, 4.5-hp flat-Twin used liquid rather than air to cool its longitudinally placed cylinders. Its radiator was placed up high behind the frame's front downtube. The Humber Cycle gained a reputation as a high-quality machine and fetched an equally high price when introduced in 1919. Its owners were rewarded with a machine of "reliability and grace" as well as a then-shattering 70 mph top speed.

A quote from the Sept. 14, 1922 issue of *The Motorcycle* magazine stated: "Outstanding features of the Humber are silence of engine operation, accessibility and smooth running."

But, like so many motorcycle companies of this era, the advance of the automobile pushed the Humber cycle to the sidelines, as the Humber cars took precedence. The last of the company's motorcycles rolled out in 1930.



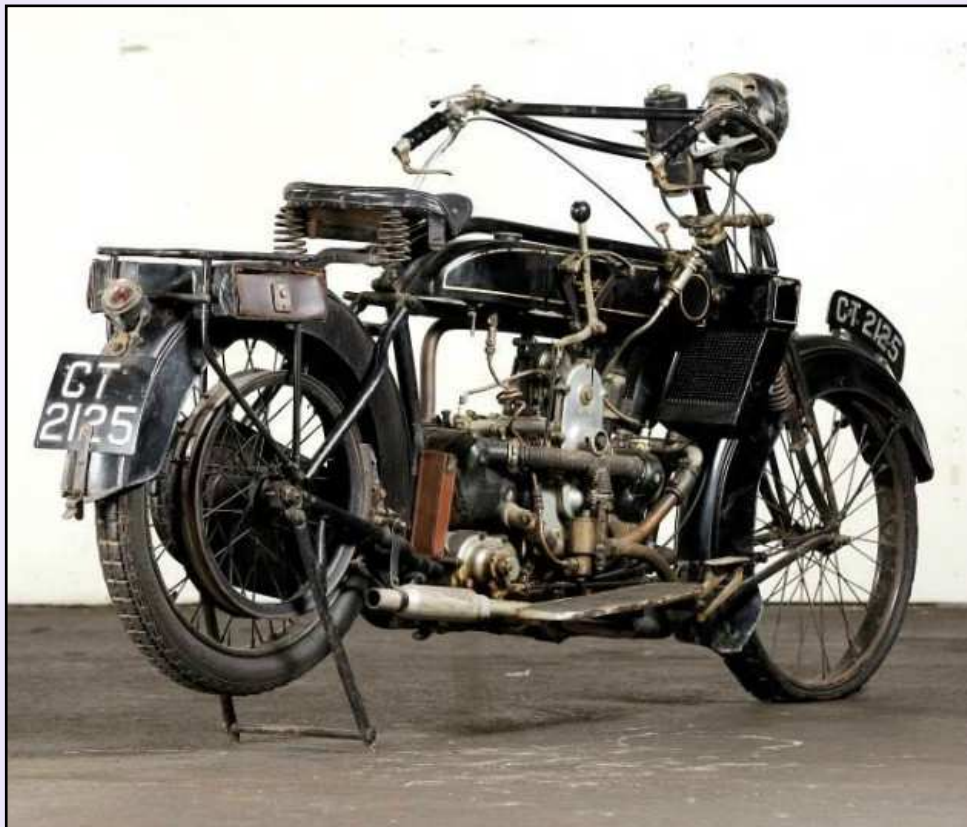
The intricate hand-shifter design offered a gated arrangement for its three-speed transmission.



The Humber's design revealed a completely exposed flywheel and, yes, that is the floorboard for the rider's foot next to the flywheel.



Prior to the advent of electric lighting, acetylene gas was used to produce the headlamp's flame. Behind the lamp is the acetylene tank.



The Humber is an unusual and technically fascinating machine among the rarest of all motorcycles. Word is that only three are still known to exist, and this is one of that very rare breed.



A 1912 Humber appears in an advertisement with wicker sidecar, its rider and passenger jauntily attired in matching gear.

Humber

**CYCLES
and MOTOR CYCLES**

THE handsome design and perfect construction of Humber Cycles may be seen in the comprehensive range of models exhibited on Stand 126 at Olympia: their vastly superior qualities, however, can only be fully realised by an actual inspection. Come and see them for yourself. There is no better value in the Cycle industry—prices range from only **£7 7s.** upwards.

MOTOR CYCLES.

The Humber Exhibit also includes a full range of 1923 Motor Cycles, including Touring Models, Sports Models, Combination Outfits and a sturdy Light Weight with 2½-h.p. engine. A close study of these models side by side with the listed prices will convince you of the exceptional value offered.

Our representatives at the Stand will be pleased to see you, and help you in your inspection of the various Cycle and Motor-Cycle Models shown.

HUMBER LTD., Coventry.
London: 32, Beilbore Viaduct, E.C.1.
 Export Dept.: Humber House,
 94, New Bond St., London, W.

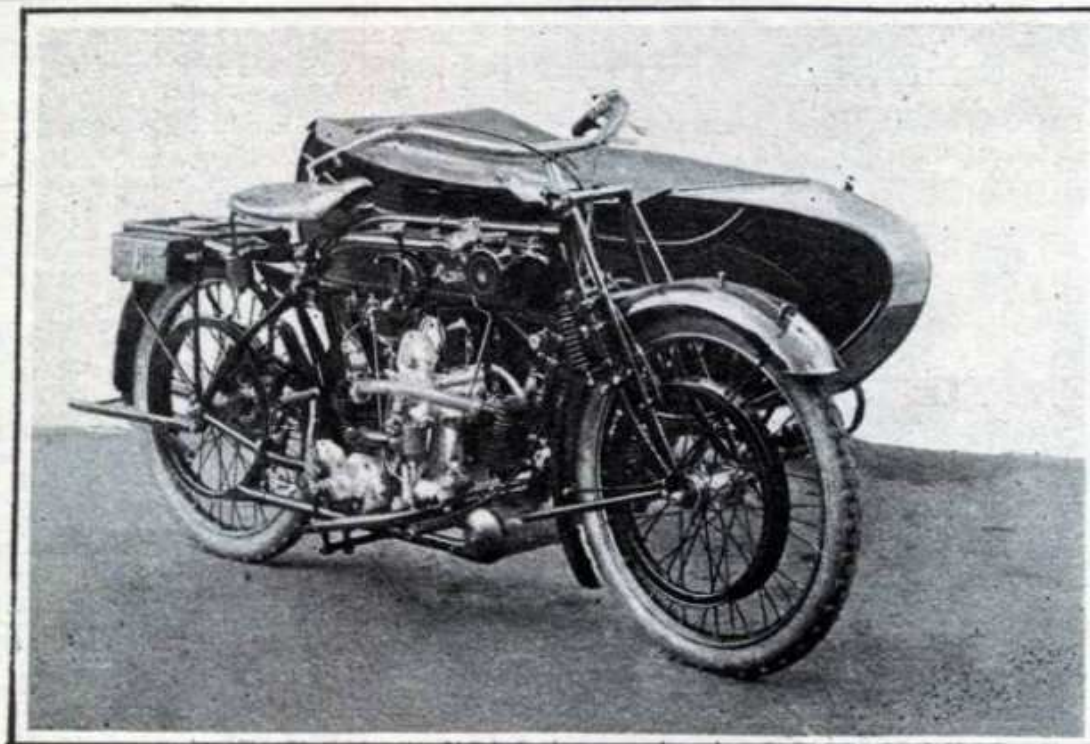
**STAND
126
OLYMPIA**



Photo appearing in the November 25, 1922 issue of The Illustrated London News. The machine shown here is minus lighting and with a front wheel pulley indicative of the interchangeability of the two rims. The 2.5 hp reference is to the lightweight single-cylinder Humber.



This original Humber Guaranty Certificate might be the only one still in existence, an interesting scrap of history owned by the author of this article.



A HUMBER MACHINE: THE 4½-H.P. COMBINATION OUTFIT.

1922 Humber advertisement appearing in The Illustrated London News. The photo shows the larger-displacement version producing 4.5 hp and combined with a Watsonian sidecar.

SOME LIGHT HUMOUR





TO BE HONEST, MR. JOBS, THE LAST TIME AN APPLE CAUSED SO MUCH EXCITEMENT AROUND HERE INVOLVED ADAM, EVE AND A SNAKE...



MOSES, MEET STEVE.
HE'S GONNA UPGRADE
YOUR TABLETS...