



wheezy Rider

Newsletter of the Fremantle group

Jan 2018
No 192

Newsletter of the Fremantle Branch of the Ulysses Club of Australia Inc.

Price
\$1.00

Hi Everyone,

Happy 2018 to you all. May all your New Year's resolutions last more than a few weeks.

The first ride of the year was led by me last weekend and it was a good start to the year, (14 people & 10 bikes I think was the count). It was a very pleasant ride at the speed limit because of the Double Demerits still being in effect. More will be revealed by TEC at the meeting this week.

We need some ride leaders for the next few months so if you can help out let Patrick know by email at rideco@ulyssesfremantle.com.au. If you have never led a ride why not make 2018 the year you lead one! We can help you out with planning if you would like assistance.

Website – On Line News, a new page for stories about rides or social weekends etc. has been set up. There is a link on the home page. So far there is a story about the Borden weekend but we would like more in there. So if you have a story that has been submitted to the Riding On or you write one about a ride; maybe you can send a copy to Ron at (WebMaster@UlyssesFremantle.com) to upload. If you can, some embedded photos into the document would be helpful.

Breakfast Club - After two great breakfast meetups Warnbro Sound Wanderers have kindly put up their hands to host January at the Nino's Café at Dolphins Quay, Mandurah on Saturday 27th January @ 9.30am. See the Calendar for details. Try to get there as they are a great way to meet up with other members.

Armadale will be doing February and Perth will do March. In March it will be one week earlier to move it away from Easter Saturday.

More things in the planning –

Weekend away - Are there any ideas for another weekend away? If you have any ideas send them to me so we can get something organised. We won't force you to lead the ride so any ideas are appreciated. Maybe a weekend sometime in March, before Easter would be good?

Australia Day Celebrations – Tony Collins has again offered his house (& Swimming Pool) for a get together on Australia Day. More details will be sent out once finalised.

Any other ideas you may have for social events or rides away please sent them to the committee, the more events we have throughout the year, the more chance you have to catch up with other members you may not have seen for a while.

On another note, I will not be renominating for the position of President next AGM. Having been on the Committee for a year and being RideCo before becoming President for the recent few years, I feel it is time for someone fresh to take up the role. There are a few in the Branch that could do a good job so hopefully someone will be keen to take up the position.

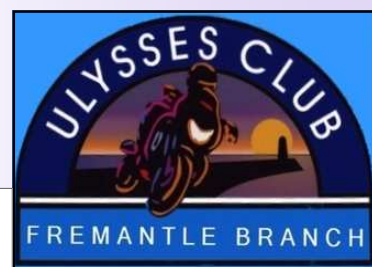
That's all for now.

Remember— It's not what you ride, it's your attitude that counts.

Colin Booth 61215
President Ulysses Fremantle Branch



We don't care....We ride there



Proud Web Sponsors



Chain Reaction : Call 08 9258 5600



Custom Bike Electrics : Call 08 93542270



Willetton Exhaust : Call 08 9354 5004



FREMANTLE BRANCH MEETING
2ND WEDNESDAY OF THE MONTH AT THE
LEOPOLD HOTEL 326 CANNING HWY BICTON WA.
The committee is the servant of the Group, not the Master

2015/2016 COMMITTEE:

President Colin Booth Member 61215
President@ulyssesfremantle.com

Secretary/Treasurer John Pepper Member 40751
SecTreas@ulyssesfremantle.com

Committee Allison Booth Member 61372
Mark Gilbert Member 62437
Paul Turner Member 61557
Reg Williamson Member 60253
Michael Bligh Member 55903
Mick Katarski Member 55306

Ride Coordinator Pat Tinnelly Member 61165
RideCo@ulyssesfremantle.com

Wheezy Rider Editor Mick Katarski Member 55306
Editor@ulyssesfremantle.com

Web Master Ron Spencer Member 53780
Webmaster@ulyssesfremantle.com

Quartermaster Paul Turner Member 61557
Qm@ulyssesfremantle.com

AROUND THE BRANCHES

ARMADALE BRANCH

Richard Peddel 93908764

BUNBURY BRANCH

Trevor Rose 0407998872 trevrose@westnet.com.au

ESPERANCE BRANCH

Steve Smith (Homer) homers@westnet.com.au

GERALDTON BRANCH

Bruce Ralph 08-99642392 0427-642-392

Bruce Ralph ralphy@wn.com.au

JOONDALUP GROUP

Ken Eaton 0893012727 ken@eatondesign.com.au

MANDURAH BRANCH

President mmugpres@hotmail.com

Secretary mmugsec@hotmail.com

PERTH BRANCH

John Gliddon 93320440 0417-945-789

WARNBRO SOUND WANDERERS

Dianna Glover, Branch President, 0419 919 275

Julie Wilcox, Branch Secretary, 0402 955 399

GREAT SOUTHERN BRANCH

Ray Prior 0898429293 guzzirider@aapt.net.au

KALGOORLIE

Andrew Mason 0890914220 0419922860

WEB ADDRESSES

National Ulysses site: www.ulyssesclub.org

Fremantle Ulysses site: www.ulyssesfremantle.com

Note: Next meeting, Wednesday
14th
February 2018

Plods and Saturday morning coffee

Wednesday morning Plods meet at South Beach for a 9:30am start.

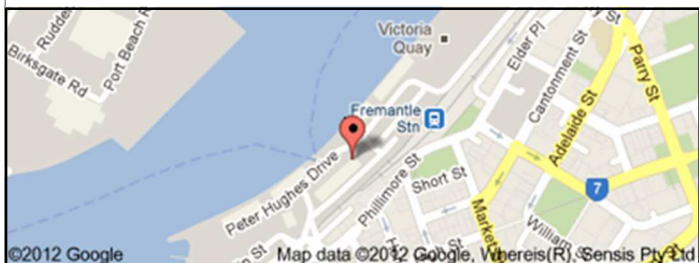
Any enquiries regarding plods can be directed to any of the following:

Will Duncan 0403014197

Patrick Hayes 0414756452

Mick Webb 0893396874

The Saturday morning coffee get together will also continue to take place at the Victoria Café, however commencement will be from 9.00am.



DISCLAIMER. All expressions of opinion are published on the basis that they are not to be regarded as expressing the official opinion of the Ulysses Club but are included for general interest only. The Ulysses Club Fremantle Branch accepts no responsibility for the accuracy of any of the opinions or information contained in the Wheezy Rider and readers should rely on their own enquiries in making any decisions touching their own interest. Errors and omissions excepted. Publication of articles at Editor's discretion.

Photos from the Fremantle Ulysses Christmas Party 2017





A WARM WELCOME AWAITS YOU
AT THE YERECOIN TAVERN
GREAT HOME COOKED MEALS

COLDEST BEER FOR MILES

**B B Q FACILITIES. LIMITED
OVER NIGHT ACCOMMODATION
DISCOUNT ON ADVANCE GROUP
BOOKINGS**

SECURE PARKING FOR BIKES

**CONTACT YOUR HOSTS CHARLIE
& DI CLARKE [Ulysses members]**

PHONE 9654 6032

E MAIL checkpointsystems@bigpond.com

WA Companies who support the Ulysses Club

(Please ensure you supply Club ID)

American Motorcycles.

211 Albany Highway Victoria Park WA 6100
Tel: (08)9361 4884. 10% Discount on most after
market parts and workshop

Five Star Yamaha.

54 Rockingham Rd Hamilton Hill WA 6163
Tel:08 9430 4090
Up to 20% Discount on parts and accessories

Hoon's Workshop.

U3/5 Church Road, Maddington WA 6109
Tel: Vince 9493 5444. Trailer, Towbars, Bike
Modifications & Custom Parts painted or chromed &
more..... By a Ulyssian for Ulyssians

In City Used Motorcycles Pty Ltd.

614 Albany Highway Victoria Park WA 6100
Tel: 08 9470 4446. Special Ulysses discount

Kim Britton Kawasaki.

2/91 Dickson Road Rockingham WA 6168
Tel: 08 9592 1113
Special Ulysses price on application

Mack 1 Motorcycles.

237 Great Eastern Highway Midland WA 6056
Tel: (08) 9250 2522. 15% Discount on access and
5% Discount for tyres plus free fitting

Motomax.

Dealer for Royal Enfield, Benelli, Sherco, SWM and
Cfmoto. Motorcycle sales, service and parts.
28 Hutton St, Osborne Park WA 6017. Ph. 9244 4441 or
Ric Steele 0417 977 937. <http://www.motomax.com.au/>
15% Discount

Motorcycles Plus.

126 Kewdale Road, Kewdale WA 6105
Tel: (08) 9353 4567. 10% Discount on parts, labour and
repairs and tyres

Rockingham Powersports.

59 Dixon Road Rockingham WA 6168
Tel: (08) 9527 5093 10% Discount

Total Motorcycle Accessories.

1028 Albany Highway East Victoria Park WA 6107
Tel: (08) 9472 3030
Special Ulysses price on application

Tyres for Bikes.

621 Albany Highway, Victoria Park, WA 6100
Tel: 08 9362 6262. 10 % Discount

Witch Cycles Suzuki.

109 Day Rd Rockingham WA 6168
Tel: (08) 9527 2398. 10% Discount



THE BREAKFAST CLUB IS HERE

Thanks all, the breakfast at Kings Parks was well supported

Breakfast is on again **Saturday January 27th @ 9.30am**

Get over the Australia Day Parties

Breakfast By The Water

Hosted by the Warnbro Sound Wanderers Branch

Where

Nino's Fish Bar Mandurah

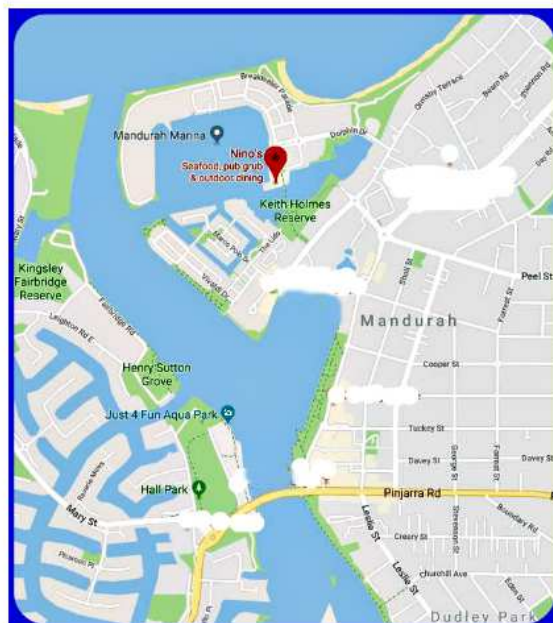
Dolphin Quay, Shop 21, 4 Zephyr Mews Mandurah

Free Wine Raffle

Coming up
February – Armadale
March - Perth



More Information
compland@dodo.com.au
joondyriders@gmail.com



First Look: 2018 Ducati Multistrada 1260

Ducati goes bigger and techier

Brent Jaswinski November 5, 2017



In Europe, Ducati will again offer a D-Air version that works with airbag-equipped Dainese jackets.

With a long list of upgrades over the last generation of Multistradas, this year's 'Strada is pretty much all new for 2018. It gets an upgrade with the new [Ducati](#) Testastretta DVT (Desmodromic Variable Timing) 1262cc engine, a new chassis, more advanced electronics, and an aesthetic update that includes new fairing panels and lighter, sportier looking wheels.

Ducati says the Multistrada essentially offers four bikes in one: from sportbike to long- distance tourer, from everyday runabout to enduro. The 1262cc Testastretta DVT engine, derived from its XDiavel stable mate, is Euro 4 approved and gives ample low- and mid-range torque for better rideability in everyday use. Ducati says the motor offers 85% of max torque from below 3,500 rpm and output at 5,500 rpm is 18% higher compared to its 1200 predecessor.

The 2018 Multistrada's bigger displacement was achieved by increasing piston stroke from 67.9 to 71.5mm (bore remains 106mm), requiring new connecting rods, crankshaft and cylinders. The DVT system was recalibrated to maximize low-to-midrange torque delivery, bringing maximum output to a claimed 158 ponies at 9,750 rpm and maximum torque of 95.5 lb-ft at 7,500 rpm.

Both the exhaust and intake had to be redesigned to achieve this performance. The exhaust piping was remodeled, and the presilencer received a new inner layout and a new muffler as well. At the intake end, the air intake mouth was reshaped.



Ducati says the new Ride-by-Wire system offers smoother throttle control. This, combined with the smoother, more accurate up and downshifting offered by the Ducati Quick Shift (DQS) system (standard on the S model, optional on the base model), should offer enhanced levels of control.

Other electronic upgrades include the Ducati Traction Control (DTC) system that has eight different intervention levels with level 1 offering the lowest degree of system intervention, while level 8 is intended for wet road surfaces and gives maximum wheelspin prevention.

The Multistrada 1260 also features a Bosch Inertial Measurement Unit (IMU), which controls Ducati Wheelie Control (DWC, also with eight levels of intervention), Bosch Cornering ABS and electronic speed control. The bike has four different riding modes including Sport, Touring, Urban and Enduro. Each mode has tailored power delivery, DTC, DWC and ABS presets uniquely beneficial to the various riding conditions, however the rider can create custom levels of his/her own to suit riding styles and preferences.

On the Multistrada 1260, all relevant information is easily seen on its LCD instrument panel, while the S model receives a new five-inch thin film transistor (TFT) screen. The new TFT panel offers higher resolution, improved readability in the sun and a simplified graphic layout for user-friendly navigation through the menus.

The S version features a full LED headlight with Ducati Cornering Lights (DCL), which activate in curves to give optimal illumination of the road surface based on lean angle. Additionally, lean angle triggered self-cancelling turn signals also come standard.

The dual 320mm disc front brake system on the Multistrada 1260 features radially-mounted Brembo four-piston monobloc calipers coupled to a radial master cylinder with adjustable lever position. At the rear, there is a single 265mm disc gripped by a floating caliper, again from Brembo. On the Multistrada S version, the braking system is shared with the Ducati Superbikes – twin 330mm discs at the front coupled with Brembo M50 monobloc radial four-piston calipers bring the S to a halt. Both the base and S version take advantage of the Bosch 9.1ME Cornering ABS ECU.

The Multistrada 1260 features a Kayaba 48mm upside-down fork, fully adjustable for spring preload, compression, and rebound. The rear is controlled by a Sachs monoshock, also fully adjustable in compression and rebound and with spring preload manually adjustable via a handy remote twist knob.



The S model is suspended by an inverted 48mm fully adjustable Sachs fork as well as a fully adjustable Sachs rear shock. The difference between the 1260 and 1260 S is that the S model will feature Ducati Skyhook Suspension (DSS) Evolution technology. The DSS Evo system analyzes data from numerous sensors on the sprung and unsprung weights of the bike to calculate and electronically set the compression and rebound damping needed to make the ride as smooth and as controlled as possible. Both suspension systems provide 6.7 inches of travel (both front and rear).

The chassis of the Multistrada 1260 features a new frontal trellis frame and includes a longer single-side swingarm. Steering angle increases from 24- to 25-degrees, and the new swingarm is 48mm longer. As a result of these changes, wheelbase is now 55mm longer. This, along with the new engine's character and suspension setup should lend the Multistrada 1260 sharper handling skills in curves while ensuring full stability when riding two-up or fully loaded.

In addition to all these changes and upgrades, Ducati has provided other user-friendly features such as a keyless ignition, where the rider can keep the electronic fob in their pocket and as long as they're within 2 meters of the bike. A metal key flips out of the fob to open the gas cap and underseat storage. Other features include cruise control (Something John Burns seemingly can't survive without), seat height adjustability and Bluetooth smartphone integration with the Ducati Multimedia System (DMS). Finally, perhaps the icing on the cake, the Multistrada 1260 offers *loong* maintenance intervals. With an oil change required only every 15,000 km (9,320 miles!) and a "Desmo Service" every 30,000 km (18,640 miles!), you can spend more time on the road and less time in the garage.

If all these features and upgrades on the Multistrada 1260 base and S models aren't up to your standards, Ducati is also offering a Pikes Peak Edition, aimed to *really* bring out the bike's sporty character. Incorporating all the S model's features, the Pikes Peak version is equipped with even lighter forged aluminum wheels and is fitted with a mechanically adjustable Öhlins fork and an Öhlins TTX36 shock. In addition, a carbon fiber Ducati Performance exhaust by Termignoni provides the bark. Finally, carbon fiber replaces much of the bodywork and a race-inspired color scheme rounds out its appearance.



2018 Ducati Multistrada 1260 S Pikes Peak.

2018 Ducati Multistrada 1260 Specifications

	Multistrada 1260	Multistrada 1260 S	Multistrada 1260 S D-Air	Multistrada 1260 Pikes Peak
Engine Type	Ducati Testastretta DVT with Desmodromic Variable Timing, L-Twin cylinder, 4 valve per cylinder, Dual Spark, liquid cooled			
Displacement	1,262 cc			
Bore x Stroke	106 x 71.5 mm			
Compression Ratio	13:1			
Power	116.2 kW (158 hp) at 9,500 rpm (claimed)			
Torque	129.5 Nm (95.5 lb-ft) at 7,500 rpm (claimed)			
Fuel injection	Bosch electronic fuel injection system, elliptical throttle bodies with Ride-by-Wire, equivalent diameter 56 mm			
Exhaust	Stainless steel muffler with catalytic converter and 2 lambda probes, aluminum tail pipes			
Gearbox	6 speed			
Gear Ratios	1=37/15 2=30/17 3=27/20 4=24/22 5=23/24 6=22/25			
Primary Drive	Straight cut gears; Ratio 1.84:1			
Final drive	Chain; Front sprocket 15; Rear sprocket 40			
Clutch	Light action, wet, multiplate clutch with hydraulic control. Self-servo action on drive, slipper action on over-run			
Frame	Tubular steel Trellis frame			
Wheelbase	1,585 mm (62.4 in)			
Rake	25°			
Trail	111 mm (4.37 in)			

Front Suspension	48 mm fully adjustable usd forks	Sachs 48 mm fully adjustable usd forks. Electronic compression and rebound damping adjustment with Ducati Skyhook Suspension Evo (DSS)	Sachs 48 mm fully adjustable usd forks. Electronic compression and rebound damping adjustment with Ducati Skyhook Suspension Evo (DSS)	Öhilins 48 mm fully adjustable usd forks
Front Wheel Travel		170 mm (6.7 in)		
Front wheel	5-spoke Y-shape cast light alloy 3.50" x 17"	5-spoke Y-shape cast light alloy 3.50" x 17"	5-spoke Y-shape cast light alloy 3.50" x 17"	3-spoke Ψ-shape forged light alloy 3.50" x 17"
Front Tire		Pirelli Scorpion Trail II 120/70 R17		
Rear Suspension	Fully adjustable Sachs monoshock unit. Remote spring preload adjustment. Aluminum single-sided swingarm	Fully adjustable Sachs unit. Electronic compression and rebound damping adjustment. Electronic spring preload adjustment with Ducati Skyhook Suspension (DSS) Evo. Aluminum single-sided swingarm	Fully adjustable Sachs unit. Electronic compression and rebound damping adjustment. Electronic spring preload adjustment with Ducati Skyhook Suspension (DSS) Evo. Aluminum single-sided swingarm	Fully adjustable Öhlins TTX36 shock absorber. Aluminum single-sided swingarm
Rear Wheel Travel		170 mm (6.7 in)		
Rear Wheel	5-spoke Y-shaped cast light alloy 6.00" x 17"	5-spoke Y-shaped casted light alloy 6.00" x 17"	5-spoke Y-shaped casted light alloy 6.00" x 17"	3-spoke Ψ-shape forged light alloy 6.00" x 17"
Rear Tire		Pirelli Scorpion Trail II 190/55 R17		
Front Brake	2 x 320 mm semi-floating discs, radially mounted monobloc Brembo callipers, 4-piston, 2-pad, with cornering ABS as standard equipment	2 x 330 mm semi-floating discs, radially mounted Brembo monobloc Evo M50 4-piston callipers, 2-pad, radial pump with cornering ABS as standard equipment	2 x 330 mm semi-floating discs, radially mounted Brembo monobloc Evo M50 4-piston callipers, 2-pad, radial pump with cornering ABS as standard equipment	2 x 330 mm semi-floating discs, radially mounted Brembo monobloc Evo M50 4-piston callipers, 2-pad, radial pump with cornering ABS as standard equipment
Rear Brake	265 mm disc, 2-piston floating calliper, with cornering ABS as standard equipment			
Fuel Tank Capacity	20 l – 5.3 gallon (US)			
Dry weight	461 lb (claimed)	467 lb (claimed)	470 lb (claimed)	454 lb (claimed)
Wet weight	511 lb (claimed)	518 lb (claimed)	520 lb (claimed)	505 lb (claimed)
Seat height	Adjustable 825 – 845 mm (32.5 – 33.3 in)			
Instrumentation	LCD	Color TFT display 5"	Color TFT display 5"	Color TFT display 5"
Ducati electronics	Vehicle Hold Control (VHC), Riding Modes, Power Modes, Ducati Safety Pack (Bosch Cornering ABS + DTC), Ducati Wheelie Control (DWC), Ducati Cornering Lights, Ducati Skyhook Suspension (DSS) Evo, Ducati Quick Shift (DQS) up/down, Cruise control, Hands-Free, Backlit handlebar switches, Auto-off indicators, ready for Ducati Quick Shift (DQS) up/down, Ducati Multimedia System (DMS), Anti-theft system	Vehicle Hold Control (VHC), Riding Modes, Power Modes, Ducati Safety Pack (Bosch Cornering ABS + DTC), Ducati Wheelie Control (DWC), Ducati Cornering Lights, Ducati Skyhook Suspension (DSS) Evo, Ducati Quick Shift (DQS) up/down, Cruise control, Hands-Free, Backlit handlebar switches, Ducati Multimedia System (DMS), Full-colour TFT display, Full LED headlamp, Auto-off indicators, ready for Anti-theft system	Vehicle Hold Control (VHC), Riding Modes, Power Modes, Ducati Safety Pack (Bosch Cornering ABS + DTC), Ducati Wheelie Control (DWC), Ducati Cornering Lights, Ducati Skyhook Suspension (DSS) Evo, Ducati Quick Shift (DQS) up/down, Cruise control, Hands-Free, Backlit handlebar switches, Ducati Multimedia System (DMS), Full-colour TFT display, Full LED headlamp, Auto-off indicators, ready for D'air system, Anti-theft system	Vehicle Hold Control (VHC), Riding Modes, Power Modes, Ducati Safety Pack (Bosch Cornering ABS + DTC), Ducati Wheelie Control (DWC), Ducati Cornering Lights, Ducati Quick Shift (DQS) up/down, Cruise control, Hands-Free, Backlit handlebar switches, Ducati Multimedia System (DMS), Full-colour TFT display, Full LED headlamp, Auto-off indicators, Ducati Performance by Termignoni homologated exhaust, Carbon fibre windscreen, High performance Öhlins suspension, Carbon fibre front mudguard, Carbon fibre side panels and Hands-Free cover, Forged wheels, ready for Anti-theft system
Emissions Standard	Euro 4			
Fuel Consumption	45.23 mpg (claimed)			

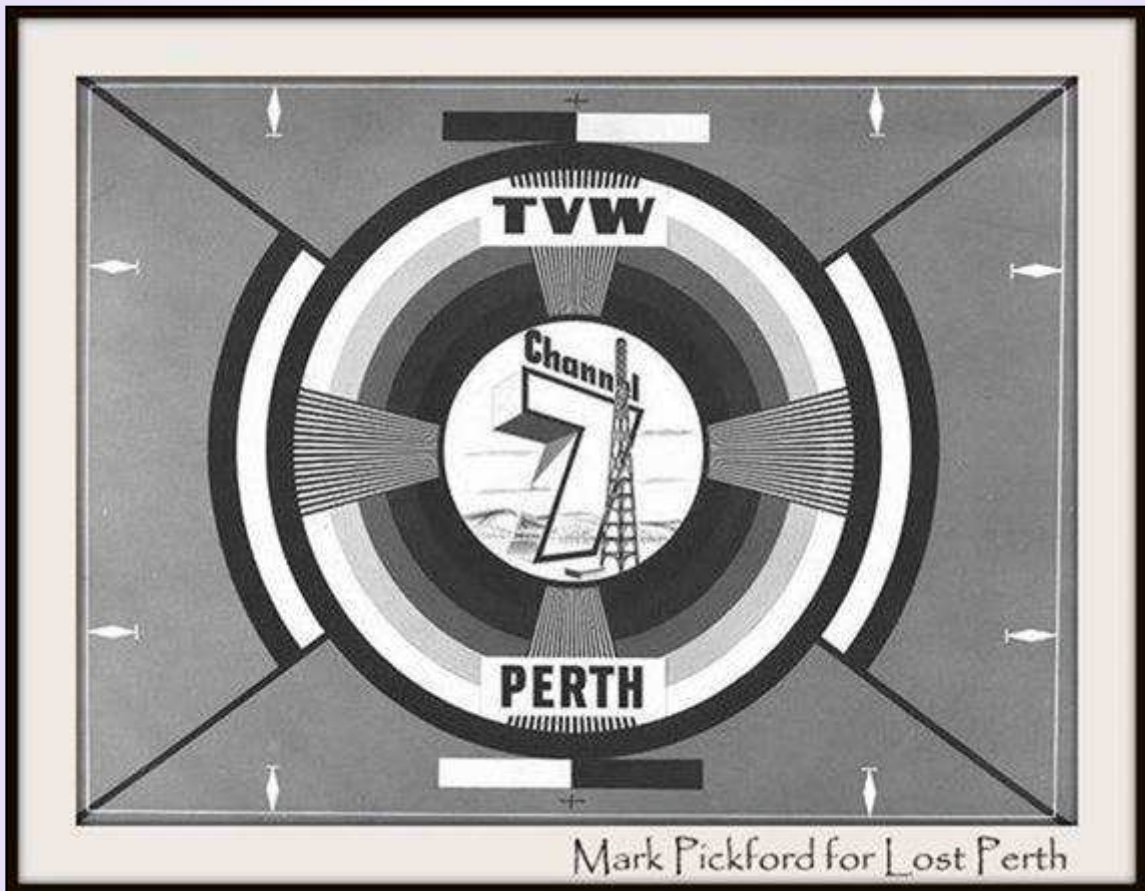
Plodding

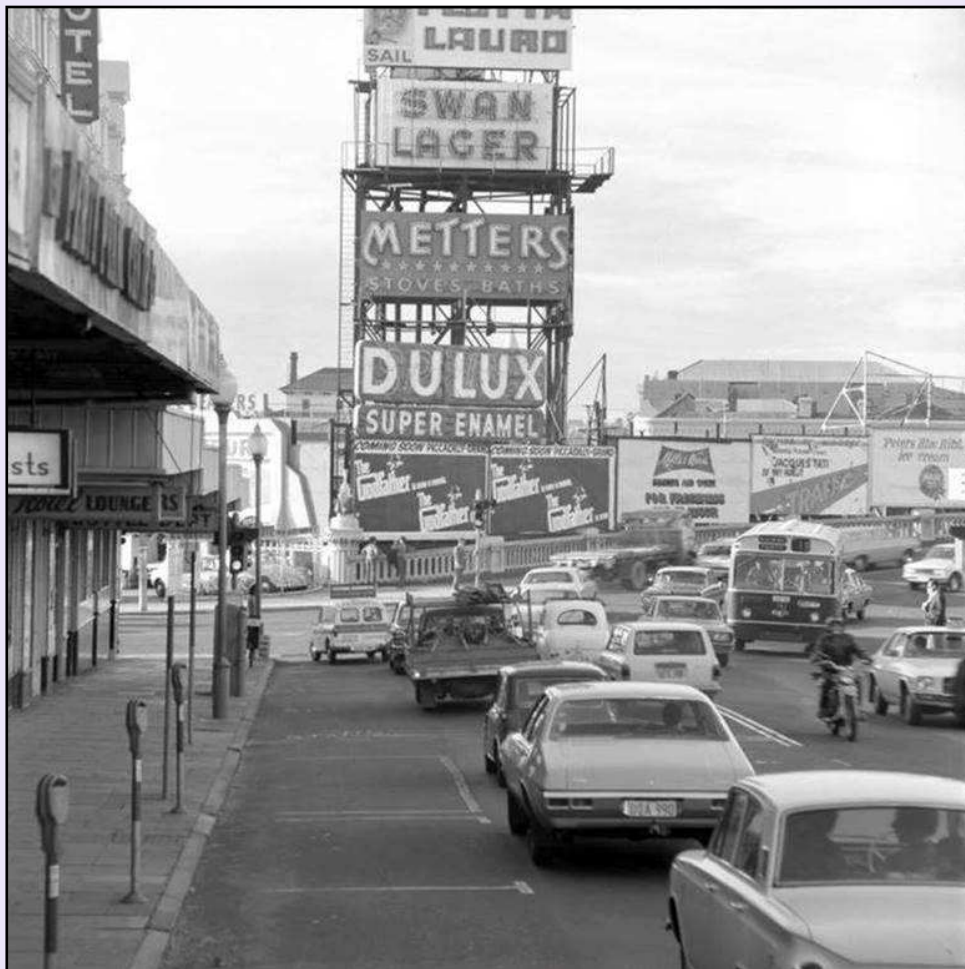
Wednesday 20th of December saw 18 "Plodders" turn up for our pre Christmas ride. Mick Webb had done some research on venues suitable for a Christmas lunch and finally decided on The Mount Helena Tavern, which turned out to be a good choice, with friendly staff who looked after us. Jim McMahon led the ride stopping at Karragullen for morning tea. Unfortunately after this, and before reaching Mount Helena we had our usual corner marker 'Stuff up'. Not sure if the age of the riders has anything to do with this but it has happened on the last three rides, or is that four? Happily every one eventually arrived and enjoyed the occasion.

Peter Brown



Some Old Perth Classics





S. & F. FLOUR 100 lb. 8c	CHARLIE
DRIED FRUITS 100 lb. 30c	PINEAPPLE 100 lb. 33c
ICING SUGAR 100 lb. 28c	PINEAPPLE 100 lb. 33c
BREAKFAST CEREAL 100 lb. 28c	CANNED FRUIT 100 lb. 20c
ORANGE JUICE 100 lb. 36c	CAMP PIE 100 lb. 29c
JELLIES 100 lb. 24c	Whole New Potatoes 100 lb. 20c
CONSERVE 100 lb. 32c	CHAMPIGNONS 100 lb. 27c
BISCUITS 100 lb. 29c	PILCHARDS 100 lb. 20c
COOKIE SELECTION 100 lb. 43c	TUNA 100 lb. 33c
ICED CAKES 100 lb. 32c	Prime Chopped Beef 100 lb. 30c
SPONGE CAKE FLANS 100 lb. 19c	Prime Chopped Beef 100 lb. 53c
CHEESECAKE MIX 100 lb. 39c	CHUTNEY 100 lb. 25c
INSTANT PUDDINGS 100 lb. 9c	MUSTARD PICKLES 100 lb. 23c
CREAMED RICE 100 lb. 18c	GHERKINS 100 lb. 41c
Extra Strong Mints 100 lb. 20c	BEETROOT 100 lb. 13c
MANDARIN JELLIES 100 lb. 23c	
THE GREAT FREEDOM OF CHOICE AT	

CARTERS	Laundry Detergent 100 lb. 63c
CUP-A-SOUP 100 lb. 25c	LIQUID DETERGENT 100 lb. 46c
ONE PAN DINNERS 100 lb. 42c	ANTISEPTIC 100 lb. 21c
Baked Beans & Spag. 100 lb. 18c	FURNITURE POLISH 100 lb. 49c
POTATO CHIPS 100 lb. 30c	TOILET SOAP 100 lb. 34c
SALTED PEANUTS 100 lb. 42c	SHAMPOO 100 lb. 49c
SALTED CASHEWS 100 lb. 40c	THICKENED CREAM 100 lb. 27c
'CHEEZELS' 100 lb. 29c	CHEESE 100 lb. 27c
NUTTY CORN 100 lb. 18c	FULLY MAT. CHEESE 100 lb. 32c
CORDIALS 100 lb. 65c	SEMI MAT. CHEESE 100 lb. 30c
PINEAPPLE JUICES 100 lb. 20c	YOGHURT 100 lb. 13c
FIRST GRADE TEA 100 lb. 26c	ICE CREAM 100 lb. 62c
DOG FOOD 100 lb. 21c	ICE DESSERT 100 lb. 45c
CAT FOOD 100 lb. 21c	TABLE MARGARINE 100 lb. 25c
DOG FOOD 100 lb. 56c	GARLIC BREAD 100 lb. 49c
	PIES & PASTIES 100 lb. 13c
CHARLIE CARTERS, W.A.'S LEADING GROCERS	



SHARE IF YOU REMEMBER

imgflip.com

SOME LIGHT HUMOUR



SOME CHRISTMAS CHEER

